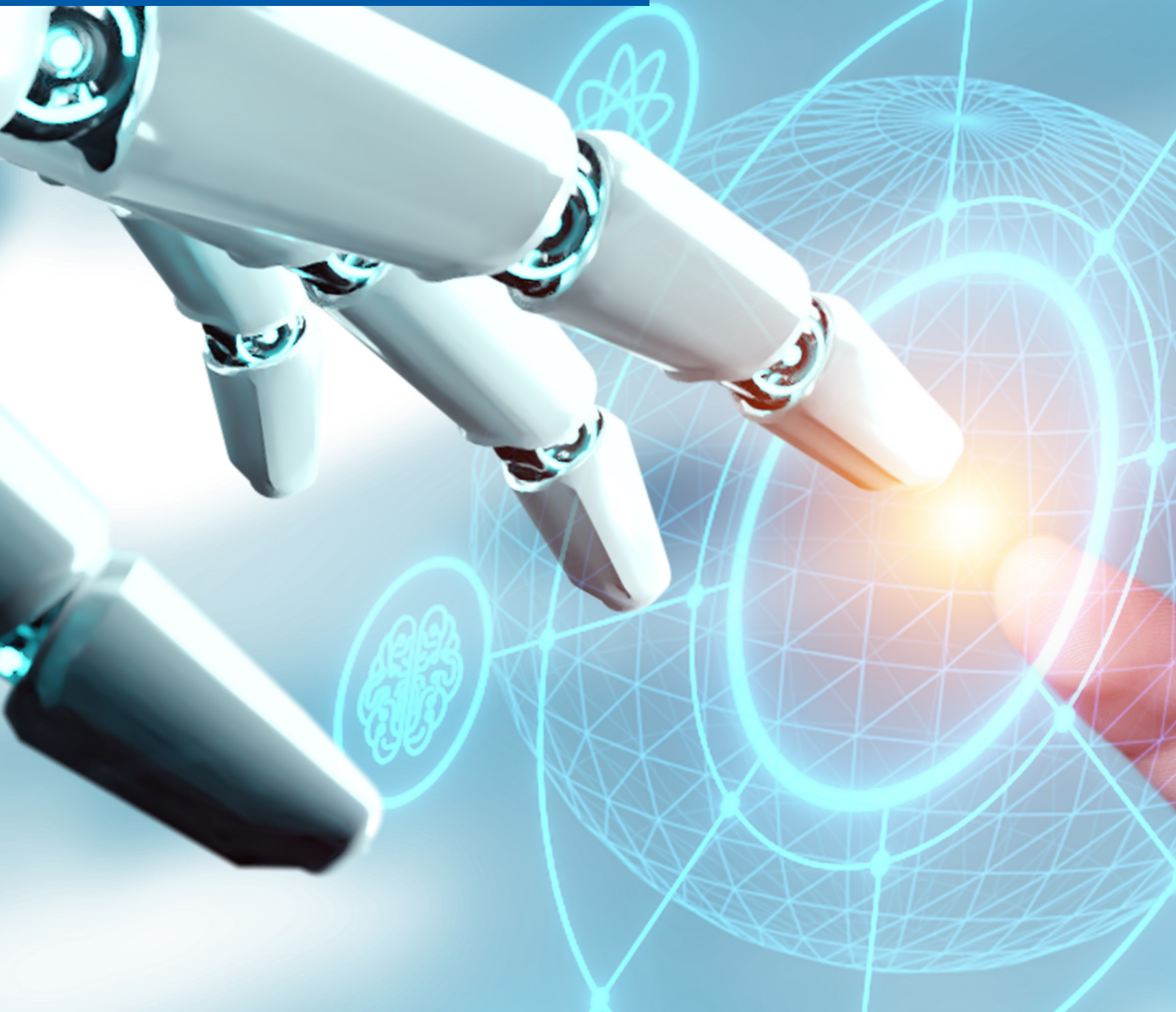


# Fact sheet 2022 | 2023



UNIVERSITEIT VAN PRETORIA  
UNIVERSITY OF PRETORIA  
YUNIBESITHI YA PRETORIA

## Department of Research and Innovation

Departement Navorsing- en Innovasie  
Kgoro ya Dinyakišišo le Mphshafatšo

Make today matter

[www.up.ac.za](http://www.up.ac.za)

## Location

International Cooperation Division  
Graduate Centre Building  
University of Pretoria  
Lynnwood Road  
Pretoria 0002  
Tel: +27 (0) 12 420 3111  
Fax: +27 (0) 420 2605  
Email: [isd@up.ac.za](mailto:isd@up.ac.za)  
Website: [www.up.ac.za/international-cooperation-division](http://www.up.ac.za/international-cooperation-division)

## Contact details – Staff

Head: International Cooperation Division (ICD)	Mr Setsipane Mokoduwe Tel: +27 (0) 12 420 5107 Email: <a href="mailto:setsipane.mokoduwe@up.ac.za">setsipane.mokoduwe@up.ac.za</a>
Manager: International Students	Mr Danny Bokaba +27 12 420 2844 <a href="mailto:danny.bokaba@up.ac.za">danny.bokaba@up.ac.za</a>
Senior International and Postgraduate Specialist Consultant: Europe	Ms Mahlogonolo Mphahlele Tel: +27 (0) 12 420 4225 Email: <a href="mailto:mahlogonolo.mphahlele@up.ac.za">mahlogonolo.mphahlele@up.ac.za</a>
Senior International and Postgraduate Specialist Consultant: North and South America, Australasia and Africa	Mr Smart Maqubela Tel: +27 (0) 12 420 6610 Email: <a href="mailto:smart.maqubela@up.ac.za">smart.maqubela@up.ac.za</a>
Senior Immigration Control Consultant	Ms Jenny Lambinon Tel: +27 (0) 12 420 4024 Email: <a href="mailto:jenny.lambinon@up.ac.za">jenny.lambinon@up.ac.za</a>





## Academic year 2022/2023

The academic year comprises two semesters.

Semester 1: January to June

Semester 2: July to December

## Closing dates for applications of incoming exchange and study abroad students

Semester 1: 30 September of the proceeding year

Semester 2: 31 March of the current year

## Academic requirements

<b>Language requirements</b>	The English level required for all international exchange students will be: Test of English as a Foreign Language (TOEFL). Minimum marks required are: Writing: 22, Speaking: 23, Reading: 21, Listening: 27 Total: 93, through the medium of English or official confirmation of English language proficiency from home institution.
<b>Areas and subjects available to exchange students</b>	All courses, except selection courses, can be negotiated between students and faculty.
<b>Courses at master's level</b>	Courses can be taken on master's level, depending on each faculty's requirements
<b>Choosing modules at UP</b>	Each prospective exchange student must negotiate his/her own subjects/modules with the relevant academic department. A list of subjects/modules offered at the University of Pretoria (UP) is available: <a href="https://www.up.ac.za/yearbooks/home">https://www.up.ac.za/yearbooks/home</a>



Select your relevant yearbook and choose your subjects/modules. Please note that you may not choose year subjects/modules. Only semester subjects/modules will be taken into account for academic credits.

<b>Credits and grading</b>	Each student will carry a normal study load per semester. Credits obtained will depend on the number of modules prescribed for a specific degree programme.
<b>Grading of credits</b>	Grading values are given in percentages. The minimum pass for each module taken is 50%.

## Accommodation

<b>Formal UP accommodation</b>	<p>The International Cooperation Division (ICD) will assist students in obtaining accommodation on campus. However, accommodation will be allocated on a first come, first served basis and is not guaranteed.</p> <p>Accommodation is situated in Hatfield and the surrounding areas.</p> <p>Exchange students must apply for accommodation via the ICD when applying to study at UP.</p> <p>Accommodation is approximately R6000,00 per month and subject to change for 2023 and is for the student's own account.</p>
<b>Alternative accommodation</b>	Private accommodation companies on campus will assist students in finding accommodation, should formal accommodation not be available.





## Immigration Clearance

<b>Study visa</b>	As soon as they have been admitted, students must apply for study visas at the South African High Commission in their home countries or nearest neighbouring country. Students are not allowed to proceed to South Africa without the valid study visa.
<b>Recommended medical aid providers</b>	<p>Students must join Momentum Health (Ingwe option) and Comp Care Medical Scheme in order for them to be registered.</p> <p>Health insurance or foreign medical cover will not be accepted. Students can apply online at <a href="http://www.ingwehealth.co.za">www.ingwehealth.co.za</a> and <a href="https://compcare.co.za/">https://compcare.co.za/</a></p> <p>Medical cover must be paid in advance for the full period for which the study visa is issued. No exceptions will be made.</p>

## General information

<b>Special orientation programme</b>	The ICD hosts a special orientation programme for all newcomers to UP. It is compulsory for all exchange and study abroad students to attend this programme.
<b>Estimated living costs</b>	It is advised that students prepare to spend approximately R8 000, 00 (ZAR) per month for the duration of their stay.
<b>Leisure time</b>	South Africa offers a range of activities that people from abroad will enjoy. ICD staff members can assist you in organising field trips, etc.

